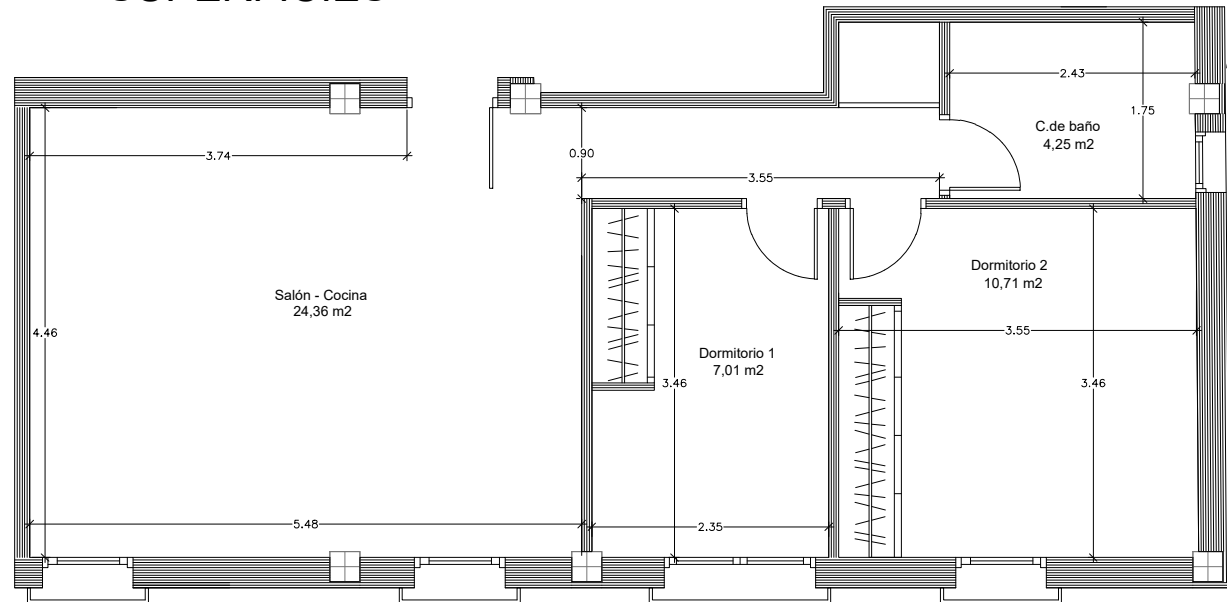
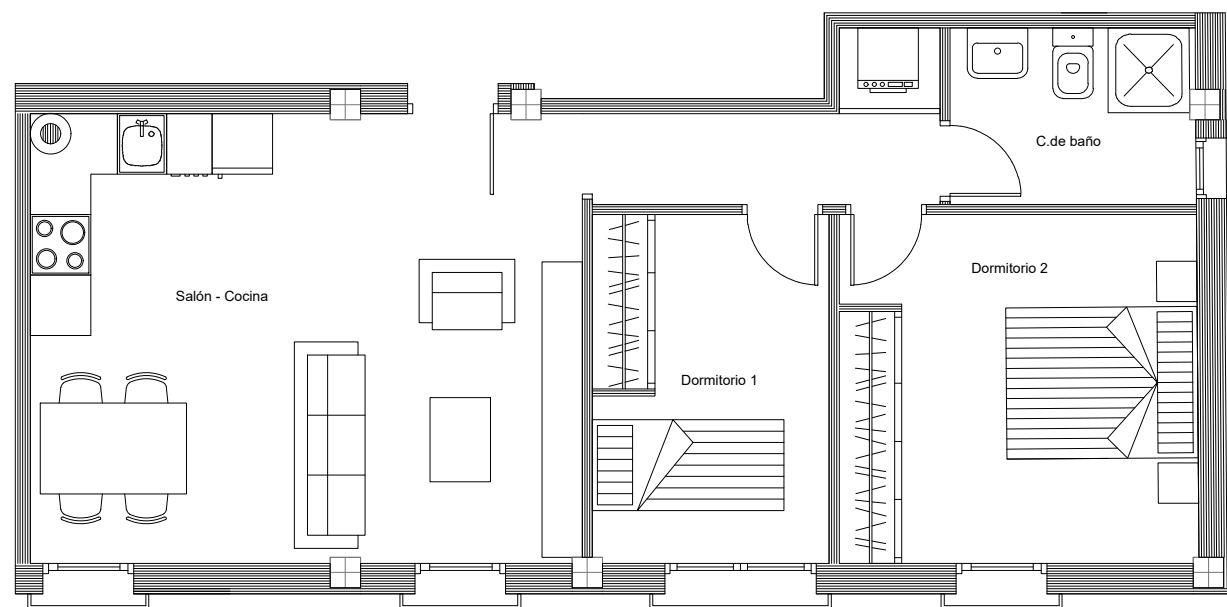


PLANO DE DISTRIBUCIÓN DE LA VIVIENDA 6B

PLANTA DE COTAS Y SUPERFICIES



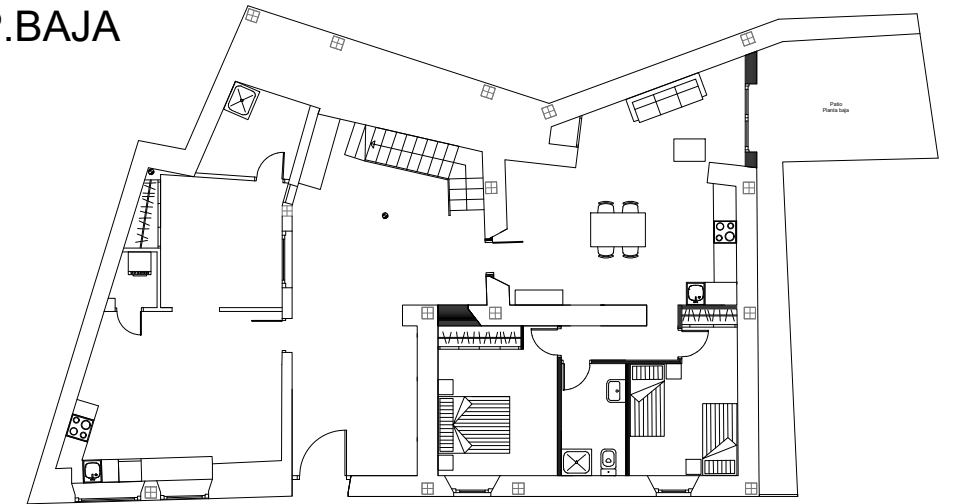
PLANTA DE DISTRIBUCIÓN



VIVIENDA 6 B	
Sup.Constr.	62,20 m ²
S.C+PPZZCC	73,04 m ²
Sup.util	53,21 m ²

EMPLAZAMIENTO

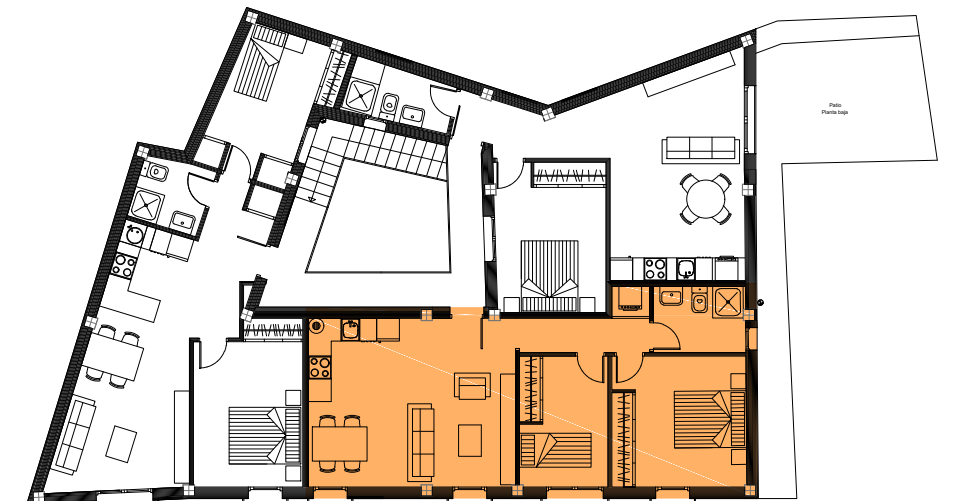
P.BAJA



P.1^a



P.2^a



E:1/75